

*****CSI additions are in green font*****

2023-2024 Report Card March

Purpose:

The Report Card March collection contains descriptors of schools. This includes a school’s professional development days, course offerings, health and wellness information, and programs offered at the school. The data from the Report Card March collection is used to populate school descriptors and the school year in the School View application.

Dependencies:



There are no dependencies for the Report Card March.

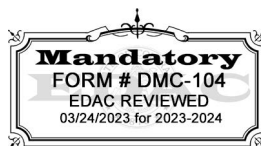
Record Expectation:

Districts should submit a record for every school that is maintained by the reporting district. All pertinent school information should be reported in this collection.

CSI seeks to ensure its resources are as accessible as possible. If you experience any difficulty in accessing a resource, please reach out to Communications_CSI@csi.state.co.us

 - Indicates Primary Key

Name of Field	Field Length	Text Start Position	Text End Position	CSV order	Excel Column	Examples	Remarks
REPORT CARD MARCH FILE							
NOTE: No blanks are allowed.							
School District/BOCES Code 	4	1	4	1	A2	0000	8001 for all records
School Code 	4	5	8	2	B2	0000	4-digit CDE ID for your school
Drama or Theatre Flag	1	9	9	3	C2	0 or 1	File has 0=no and 1=yes
Dance Flag	1	10	10	4	D2	0 or 1	File has 0=no and 1=yes
Comprehensive Health Education Flag	1	11	11	5	E2	0 or 1	File has 0=no and 1=yes
Concurrent Enrollment Classes on School Property Flag	1	12	12	6	F2	0 or 1	File has 0=no and 1=yes
Opportunities for Civic or Community Engagement Flag	1	13	13	7	G2	0 or 1	File has 0=no and 1=yes
Internet Safety Programs Flag	1	14	14	8	H2	0 or 1	File has 0=no and 1=yes

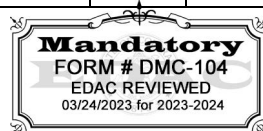


2023-2024 Report Card March

Extracurricular Activities Flag	1	15	15	9	I2	0 or 1	File has 0=no and 1=yes
Athletics Flag	1	16	16	10	J2	0 or 1	File has 0=no and 1=yes
Library Flag	1	17	17	11	K2	0 or 1	File has 0=no and 1=yes
Credit Recovery Programs Flag	1	18	18	12	L2	0 or 1	File has 0=no and 1=yes
Assistance of Out-of-School Youth to Re-Enroll Flag	1	19	19	13	M2	0 or 1	File has 0=no and 1=yes
Physical Activity Flag	1	20	20	14	N2	0 or 1	File has 0=no and 1=yes
School Health Team or School Wellness Committee Flag	1	21	21	15	O2	0 or 1	File has 0=no and 1=yes
School Based Health Center Flag	1	22	22	16	P2	0 or 1	File has 0=no and 1=yes
Physical Education Required for all Students Flag	1	23	23	17	Q2	0 or 1	File has 0=no and 1=yes
Comprehensive Health Education Required for all Students Flag	1	24	24	18	R2	0 or 1	File has 0=no and 1=yes
Uses Federal School Breakfast Program in Classroom Flag	1	25	25	19	S2	0 or 1	File has 0=no and 1=yes
CDE Licensed School Nurse is Available During School Hours Flag	1	26	26	20	T2	0 or 1	File has 0=no and 1=yes
Professional Development Days	4	27	30	21	U2	Numeric Half Day = .5	Example: 4
Work-Based Education Experience Flag	1	31	31	22	V2	0 or 1	File has 0=no and 1=yes
COVID Response Remote Learning Days	5	32	36	23	W2	Numeric	Example 5.5
Does your school use any of the following evidence-based bullying prevention:							
Bullying Policy: Prohibit Bullying Flag	1	37	37	24	X2	0 or 1	File has 0=no and 1=yes
Bullying Policy: Define Bullying Flag	1	38	38	25	Y2	0 or 1	File has 0=no and 1=yes
Bullying Policy: Prevention and Intervention Flag	1	39	39	26	Z2	0 or 1	File has 0=no and 1=yes
Bullying Policy: Reporting Flag	1	40			AA2	0 or 1	File has 0=no and 1=yes
Bullying Policy: Investigating and Responding Flag	1	41			AB2	0 or 1	File has 0=no and 1=yes
Bullying Policy: Supports and Referrals Flag	1	42			AC2	0 or 1	File has 0=no and 1=yes
Does your school use any of the following evidence-based bullying programs:							
Bully Prevention in Positive Behavioral Interventions and Supports (BP-PBIS) Flag	1	43	40	27	AD2	0 or 1	File has 0=no and 1=yes
Facing History and Ourselves Flag	1	44	41	28	AE2	0 or 1	File has 0=no and 1=yes
Olweus Bully Prevention Program (BPP) Flag	1	45	42	29	AF2	0 or 1	File has 0=no and 1=yes
Second Step Flag	1	46	43	30	AG2	0 or 1	File has 0=no and 1=yes
Other Flag	1	47	44	31	AH2	0 or 1	File has 0=no and 1=yes
If Other (specify)	50	48	94	32	AI2	TEXT	TEXT

Last updated: 3/4/2023

CSI Last revised: 1/11/2024



Page 2 of 8

2023-2024 Report Card March

Report Card March File

NOTE: No blanks are allowed.

School District/BOCES Code – A unique code assigned to a district by CDE. Refer to School District/BOCES Code table. School District/BOCES Code Table. [8001 for all records.](#)

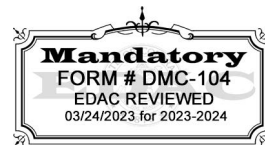
School Code – A unique code assigned by CDE to a school building. Refer to School Building Code Table. [4-digit CDE ID for your school](#)

Drama or Theatre Flag — A yes or no flag which indicates whether or not your school offers a Drama or Theatre course to its students. A Drama and Theatre Arts Education course is defined as: a component of a standards-based curriculum which includes meaningful content, quality instruction and assessments, and an organized plan to ensure that students master the grade level concepts and skills for: forming new theatrical works, interpreting theatrical works, developing characters and analyzing roles, performing through multi-sensory experiences, responding and analyzing theatrical works (including but not limited to: drama, theatre, history and literature of the theatre, directing, and play writing).

Dance Flag – A yes or no flag which indicates whether or not your school offers a Dance Course to its students. A Dance Education course is defined as: a component of a standards-based curriculum which includes meaningful content, quality instruction and assessments, and an organized plan to ensure that students master the grade level concepts and skills for: performing through multi-sensory experiences, movement, technique, creating and/or improvising dance works, recognizing historical and cultural context, and critiquing and analyzing dance works (including but not limited to: dance techniques, dance repertory, expressive movement, and dance appreciation).

Comprehensive Health Education Flag – A yes or no flag which indicates whether or not your school offers Comprehensive Health Education. A Comprehensive Health Education course is defined as: a component of a standards-based curriculum which includes meaningful content, quality instruction and assessments, and an organized plan to ensure that students master the grade level concepts and skills for: adopting and maintaining health-enhancing behaviors for physical, sexual, reproductive, social, emotional, and mental wellness as well as preventing and managing risks including injury; alcohol, tobacco, and drug use; and violence and bullying.

Concurrent Enrollment Classes on School Property Flag — A yes or no flag which indicates whether or not your school offers concurrent enrollment courses made available on your school’s campus or online. A concurrent enrollment course shall be defined as any course that



2023-2024 Report Card March

allows a student to simultaneously earn credit both by a local education provider and an institution of higher education. This field is REQUIRED for ALL High Schools.

Opportunities for Civic or Community Engagement Flag — A yes or no flag which indicates whether or not your school offers opportunities for Civic or Community Engagement to its students. Opportunities for Civic or Community Engagement are defined as: Working to make a difference in the civic life of our communities and developing the combination of knowledge, skills, values and motivation to make that difference. Civic engagement can take many forms— from individual volunteerism to organizational involvement to electoral participation. It can include efforts to directly address an issue, work with others in a community to solve a problem or interact with the institutions of representative democracy.

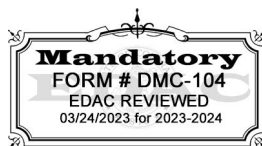
Internet Safety Programs Flag — A yes or no flag which indicates whether or not your school offers an Internet Safety Program to its students as part of the curriculum. Every public school is required (due to C.R.S. 22-87-102 (2): Children’s Internet Protection Act) to adopt and enforce reasonable policies of internet safety that will protect children from access to harmful material without compromising either the use of the internet as an education resource or responsible adult use of internet services in the school. This field is not indicating if the school has the required policy, however, it is to indicate if the school as an Internet Safety Program within the curriculum. The Internet Safety Program for this field is being defined as: Educating the students about potential online dangers and assisting the students to surf the Internet safely.

Extracurricular Activities Flag — A yes or no flag which indicates whether or not your school offers Extracurricular Activities to its students. An Extracurricular Activity is defined as: Interscholastic activities performed by students that fall outside the realm of the normal curriculum of the school which contribute to the development of leadership, talent and creativity of the individual participant in an equitable and fair manner to produce an experience in education that is valuable and fair to all.

Athletics Flag — A yes or no flag which indicates whether or not your school offers a course of Athletics for its students. A course of Athletics is defined as: A program designed for students who desire to specialize in one or more sports and refine their talents in order to compete with others of similar interests and abilities.

Library Flag — A yes or no flag which indicates whether or not your school offers a Library for its students. A school library is defined as: a dedicated facility located in and administered by the school that provides at least the following: an organized, circulating collection of printed and/or audiovisual and/or computer-based resources, or a combination thereof; paid staff; an established schedule during which services of the staff are available to students and faculty; instruction on using library materials to support classroom standards and improve student research and literacy skills.

Credit Recovery Programs Flag — A yes or no flag which indicates whether or not your school offers a Credit Recovery Program for its students. A credit recovery program shall be defined as: A program implemented at the school and/or district level that enables struggling high school students who have fallen behind on graduation requirements or middle school students who have fallen behind in grade promotion and/or transition into high school to continue earning course credits and make progress toward graduation or grade promotion. This includes programs



2023-2024 Report Card March

or activities that facilitate accrual of credits or course remediation especially in core courses (math, science, reading and social studies.) Credit recovery may occur as a student is completing other courses or as an extension activity, such as summer school. Examples include: self-paced digital content programs, online courses, work/study that awards credits, course remediation programs and alternative education programming that result in accrual of credits. This field is REQUIRED for ALL Middle/Jr. High and High Schools.

Assistance of Out-of-School Youth to Re-Enroll Flag - A yes or no flag which indicates whether or not your school offers an Assistance of Out-of-School Youth to Re-Enroll for its students. Assistance for out-of-school youth to reenroll shall be defined as: School and/or district approaches and systems to re-engage youth who are not enrolled in school and have not earned a high school credential (either a diploma or equivalency credential, such as a HSED). This includes retrieval of students who have dropped out within the current school year or those who have dropped out in previous years. Examples include: designating staff to identify and outreach to students who have dropped out and re-enrollment processes that involve individualized transition planning and assessment of a re-enrolled student's educational needs/strengths and provision of support to overcome and link to resources This field is REQUIRED for ALL Middle/Jr. High and High Schools.

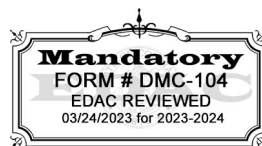
Physical Activity Flag— A yes or no flag which indicates whether or not all students have an opportunity to participate in an average of 30 minutes of physical activity during the school day. Physical activity may include, but need not be limited to exercise programs, fitness breaks, recess, field trips that include physical activity, classroom activities that include physical activity and physical education classes. Recess is defined as: a scheduled period of relaxation or play, especially outdoors.

School Health Team or School Wellness Committee Flag - A yes or no flag which indicates whether or not an active School Health Team or School Wellness Committee exists. A school health team consists of members of the school community who meet regularly to coordinate activities to enhance the health and wellness of students and staff.

School Based Health Center Flag – A yes or no flag which indicates whether or not the school houses a school-based health center. A school-based health center (SBHC) is a health care facility located within or on school grounds. It is staffed by a multi-disciplinary team of medical and behavioral health specialists.

Physical Education Required for all Students Flag – A yes or no flag which indicates whether or not the school requires credits in the area of Physical Education. A Physical Education course is defined as: a component of a standards-based curriculum which includes meaningful content, quality instruction and assessments, and an organized plan to ensure that students master the grade level concepts and skills for: competent movement; commitment to regular, health-enhancing physical activity and fitness; and responsible, respectful, cooperative, and safe behavior in group settings.

Comprehensive Health Education Required for all Students Flag– A yes or no flag which indicates whether or not the school requires credits in the area of Comprehensive Health Education (Middle/High School Only.) A Comprehensive Health Education course is defined as: a component of a standards-based curriculum which includes meaningful content, quality instruction and assessments, and an organized plan to ensure that students master the grade level concepts and skills for adopting and maintaining health-enhancing behaviors for physical, sexual, reproductive,



2023-2024 Report Card March

social, emotional, and mental wellness, as well as preventing and managing risks, including injury; alcohol, tobacco, and drug use; and violence and bullying. This field is REQUIRED for ALL Middle/Jr. High and High Schools.

Uses Federal School Breakfast Program in Classroom Flag – A yes or no flag which indicates whether or not the school provides breakfast in the classroom through the federal school breakfast program. Breakfast in the classroom is offered after the opening bell and is offered to all students.

CDE Licensed School Nurse is Available During School Hours Flag – A yes or no flag which indicates whether or not your school has a CDE licensed nurse accessible every day during school hours for consultation on the health needs of students including delegation, emergency plans and staff training.

Professional Development Days - A numeric field which indicates the number of whole and partial days scheduled in which all instructional staff members are engaged together in professional development activities for the current school year. The current school year is the fiscal year, i.e. July through June. Calculate this in terms of days, and not hours. Exclude professional leave (teacher option) days from this figure as well as days scheduled for classroom setup or calculation of grades. A warning will be issued if Professional Development Days is greater than 21.

- Example: If there are 28 hours of Professional Development recorded throughout the year, then there would be $28 \text{ hours} / 8 \text{ hours} = 3.5$ Days Professional Development Days recorded.

Work-based Educational Experiences Flag – A yes or no flag which indicates whether or not your school offers work-based educational experiences. Work-based educational experiences can include apprenticeships, internships, externships, supervised volunteer experiences, etc. Career and Technical Education courses are not considered work-based educational experiences. This field will be REQUIRED for ALL High Schools.

COVID Response Remote Learning Days – A numeric field which indicates the number of whole and partial days the entire school was forced to switch from in-person to remote learning as a result of responding to COVID health and safety concerns. Exclude days when the school was forced to switch from in-person to remote learning as a result of emergency school closures (i.e. due to severe weather or an emergency facilities issue such as a water leak). Also exclude days when only a portion of the school community was forced to switch to remote learning, for instance due to the quarantine of a cohort of students.

- Example: If the school switches from in-person to remote learning for 5 days due to an increase on COVID cases in the community, enter the value 5 days.

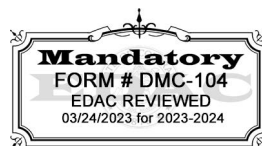
Resources at <https://cssrc.colorado.gov/>
CSI Schools must have a specific policy regarding bullying prevention and education pursuant to the Colorado Safe Schools Act (C.R.S. 22-32-109.1 - discusses what should be in your policy).

Does your school use any of the following evidence-based bullying prevention:

~~**Bullying Policy: Biennial Survey Flag** – A yes or no flag which indicates whether or not your school administers a survey to students at least every~~

Last updated: 3/4/2023

CSI Last revised: 1/11/2024



2023-2024 Report Card March

other year on how frequently they perceive themselves to be a target of bullying and a witness to bullying.

~~**Bullying Policy: Bullying Prevention Team Flag** – A yes or no flag which indicates whether or not your school has a team of persons who advise the school administration concerning the severity and frequency of bullying incidents that occur in the school.~~

~~**Bullying Policy: Consequences Flag** – A yes or no flag which indicates whether or not your school sets forth appropriate disciplinary consequences for students who bully other students and for any person who takes retaliatory action against a student who reports an incident of bullying.~~

Bullying Policy: Prohibit Bullying Flag – A yes or no flag which indicates whether or not your school publicly (e.g., in school handbook, on school website) prohibits bullying, retaliation against those reporting bullying, and making knowingly false accusations of bullying behavior.

Bullying Policy: Define Bullying Flag – A yes or no flag which indicates whether or not your school publicly defines bullying and how it is different from other forms of aggression.

Bullying Policy: Prevention and Intervention Flag – A yes or no flag which indicates whether or not your school publicly describes its bullying prevention and intervention efforts (e.g., training staff, a team that leads bullying prevention efforts, surveying students on the severity and frequency of bullying).

Bullying Policy: Reporting Flag – A yes or no flag which indicates whether or not your school publicly describes the ways bullying can be reported to school staff.

Bullying Policy: Investigating and Responding Flag – A yes or no flag which indicates whether or not your school publicly describes the investigative procedures that the school follows when a report of bullying is made and how the school responds to bullying behavior.

Bullying Policy: Supports and Referrals Flag – A yes or no flag which indicates whether or not your school publicly describes the supports and referrals provided to students involved in bullying. This includes efforts to:

- change the behavior of students engaged in bullying,
- support targets of bullying in ways that avoid increasing their likelihood of discipline, and
- support witnesses of bullying.

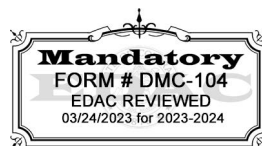
Does your school use any of the following evidence-based bullying programs:

Bully Prevention in Positive Behavioral Interventions and Supports (BP-PBIS) Flag - A yes or no flag which indicates whether or not your school uses Bully Prevention in Positive Behavioral Interventions and Supports (BP-PBIS) or Expect Respect as an evidence-based prevention bullying program.

Facing History and Ourselves Flag - A yes or no flag which indicates whether or not your school uses Facing History and Ourselves as an evidence-based bullying prevention program.

Last updated: 3/4/2023

CSI Last revised: 1/11/2024



2023-2024 Report Card March

Olweus Bully Prevention Program (BPP) Flag - A yes or no flag which indicates whether or not your school uses Olweus Bully Prevention Program (BPP) as an evidence-based bullying prevention program.

Second Step Flag - A yes or no flag which indicates whether or not your school uses Second Step as evidence-based bullying program.

Other Flag - A yes or no flag which indicates whether or not your school uses an Other bullying program as evidence-based bullying program.

If Other (Specify) – If Other Flag is marked YES list the name the program. REQUIRED if Other Flag is marked YES.

This field is text and should be completed if you answered "Yes" to the prior question. Apostrophes and special characters not allowed.

