

# Welcome & Updates

---

Spring 2022 – School Gathering



# Today's Agenda

Time	Sessions
8:30-9:15	Welcome & Updates
9:15-10:00	Legislative Updates
10:00-10:15	Break
10:15-11:15	Feedback Carousel
11:15-11:30	Closing



# But First...

- Introductions
- CSI Updates
- Looking Ahead



# Introductions

- Name
- Position
- School (model, location)
- Years with School



# School Leader Survey Feedback



# Areas of Focus



Funding Inequity



Streamlining submission requirements across the organization



Pockets of interest in operational support (transportation, facilities)



# CSI Updates



# Organizational Updates

**Terry Croy Lewis**  
Executive Director

**Kim Cablan**  
Director of Professional Learning & School Programs

Professional Learning & School Programs

**Matt Hudson**  
Director of Special Education Director

SPED / 504

**Janet Dinnen**  
Chief of Staff

Communications  
Data Submissions  
Human Resources

**Ryan Marks**  
Chief of Accountability & Authorization

Accountability  
School Performance  
Legal & Policy

**Andi Denton**  
Chief of Finance & Operations

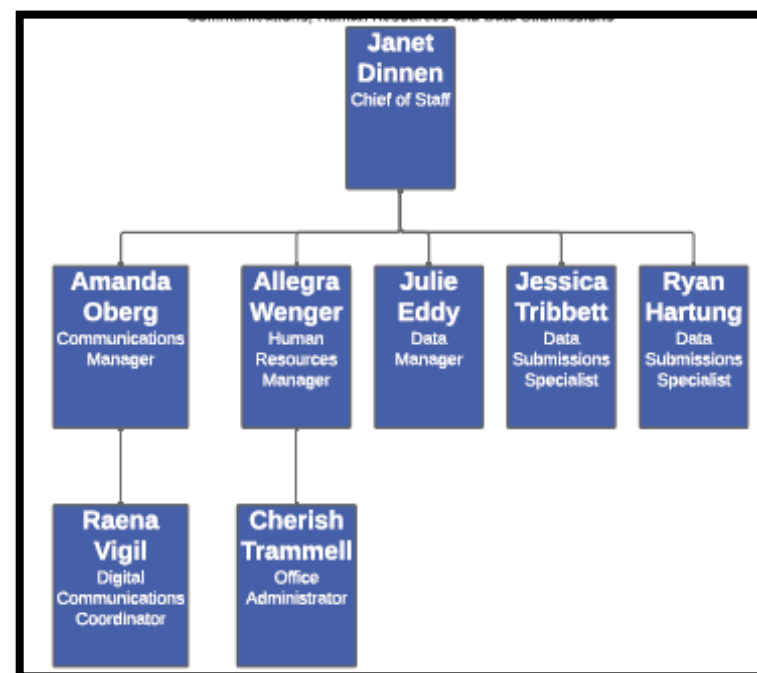
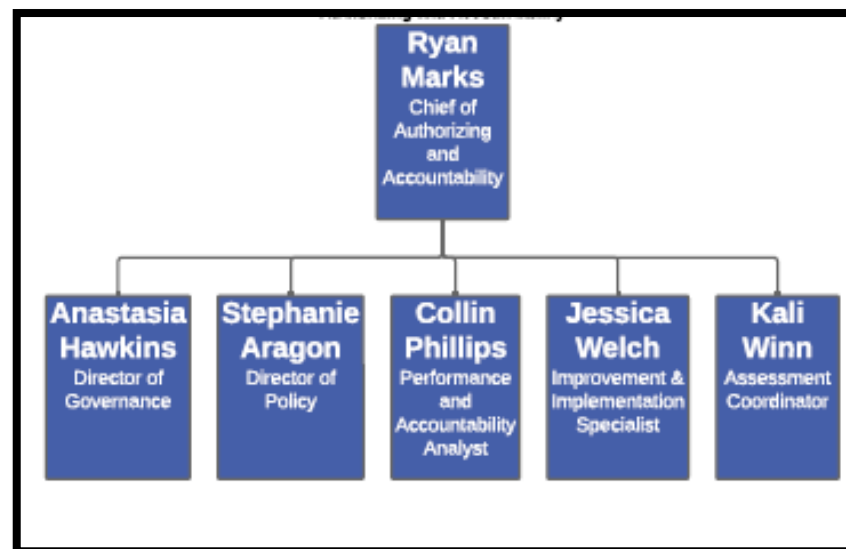
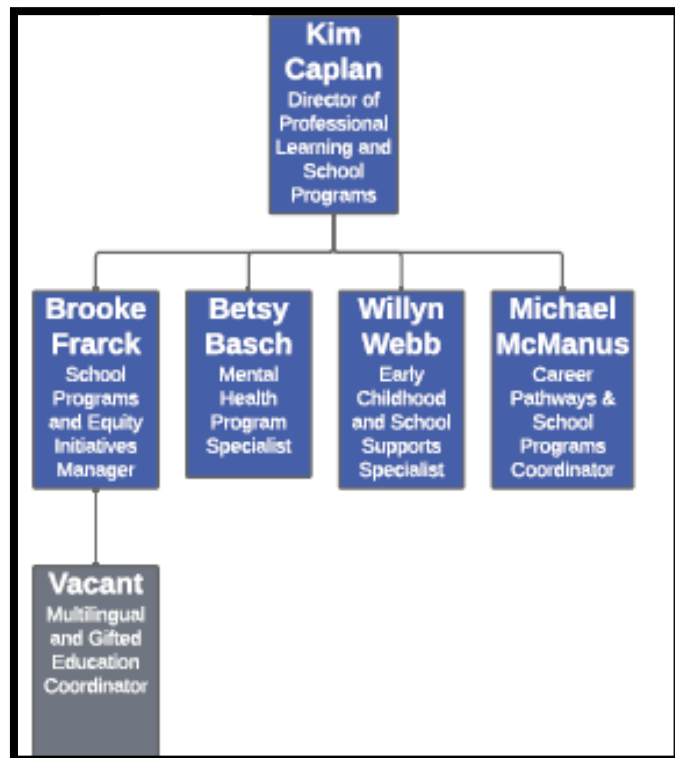
Finance  
Operations







# Team Updates





# System Updates

- Secure File Share System
- IEP Plan Management / SPED State Reporting
- Quickbase





# CSI Accountability Updates

*State accountability updates will be included in the legislative updates section*

- Proposed updates to the CSI Performance Frameworks will be given to the CSI board at the June Retreat
- **Key Changes**
  - Reorganizing and refreshing the financial framework
  - Adding quantitative informational measures to the organizational framework

## During the Feedback Carousel...

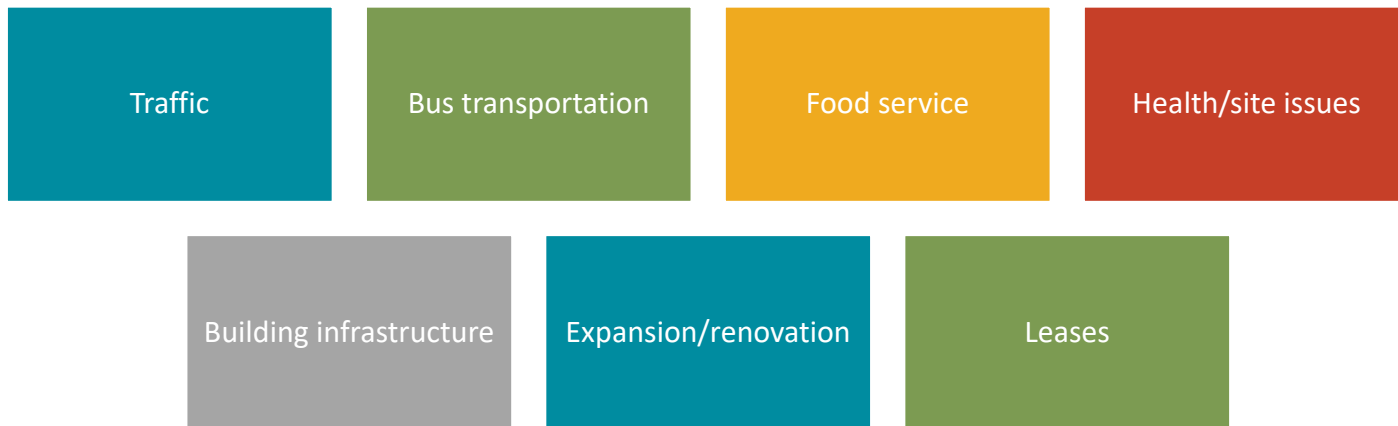


We welcome your thoughts and feedback on some of the proposed changes to CARS.



# Facility Supports

- School Leader Survey identified desire for greater facility supports



## During the Feedback Carousel ...

We welcome your thoughts and feedback on how CSI can best support schools with facility challenges





# Mental Health Program Plans

May 2022

2022-2023

August 2023

Program Plan  
Template shared  
out May 26

Notations for legal  
compliance and  
best practice

Monthly trainings  
and regular  
supports to help  
schools develop  
plans

School plans  
finalized for 2023-  
2024 school year



# Mental Health AmeriCorps Grant



**AmeriCorps**



**COLORADO**

**CHARTER SCHOOL INSTITUTE**



*Empowering Changemakers. Igniting Service.*

- Contact [betsybasch@csi.state.co.us](mailto:betsybasch@csi.state.co.us) if interested!



# 22-23 Continuous Improvement Collaborative

## THEORY OF ACTION

By using **adult learning theory** to design long-term, context relevant opportunities to **build the capacity** of school leadership teams in **continuous improvement cycles**, CSI staff will support the ability of schools to **improve outcomes for their school communities**.



“[...] professional learning opportunities for principals, such as high-quality preparation programs, **ongoing training, peer networks, and coaching support**, can build leadership capacity and reduce principal turnover.”\*

\*Understanding and Addressing Principal Turnover”:  
[https://learningpolicyinstitute.org/sites/default/files/product-files/NASSP\\_LPI\\_Principal\\_Turnover\\_Research\\_Review\\_REPORT.pdf](https://learningpolicyinstitute.org/sites/default/files/product-files/NASSP_LPI_Principal_Turnover_Research_Review_REPORT.pdf)

# Interested?



- **Who:** School teams of 2-5 participants. At least one member of the team must be in a school leadership role.
- **What:** Two full day in-person sessions (fall and spring) monthly virtual meetings and coaching sessions (2 hours/month).
- **Cost:** CSI has received a grant to cover the costs of all participants, including covering the travel costs of teams coming from outside the Denver metro.
- **How to apply:** [bit.ly/2022CIC](https://bit.ly/2022CIC)
- **Deadline:** June 1, 2022





# Looking Ahead



# Looking Ahead

Board Retreat

Organizational  
Updates

Professional  
Development  
Planning

CARS 3.0

Alternate AU



# Final Thoughts

# Legislative Updates

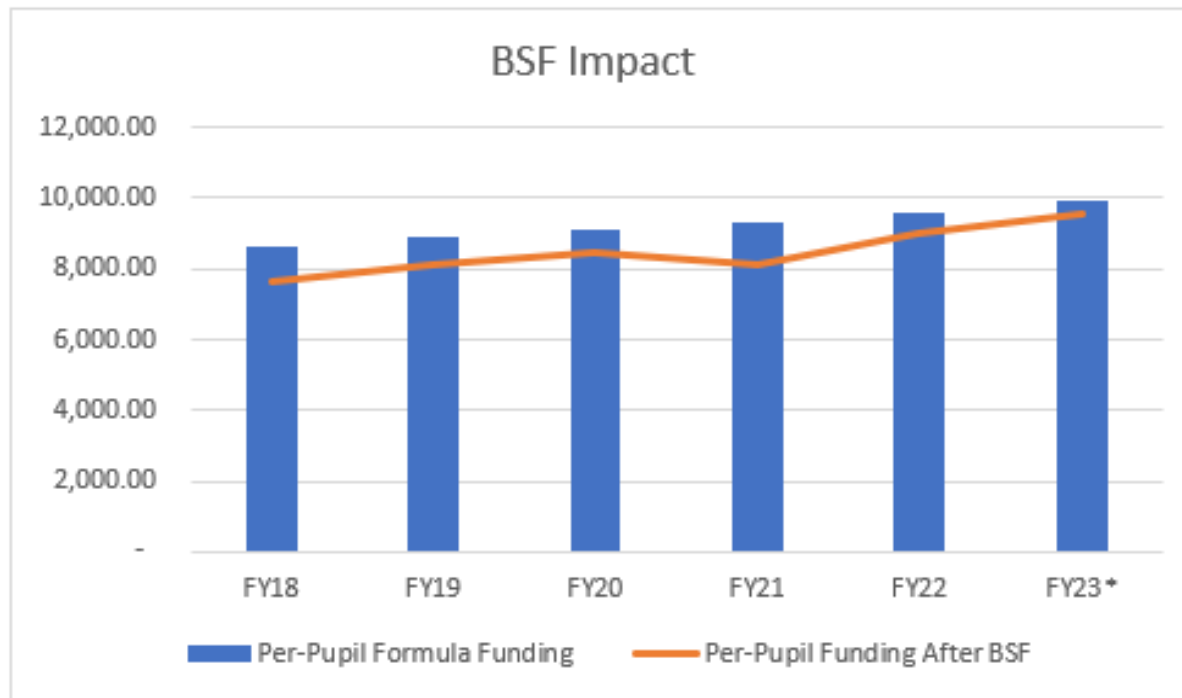
---

Colorado League of Charter Schools –  
Legislative Updates



# Funding Updates – PPR

- **PPR Proposed School Finance Bill – HB-22-1390**
- Total program after budget stabilization factor, \$9,560\*

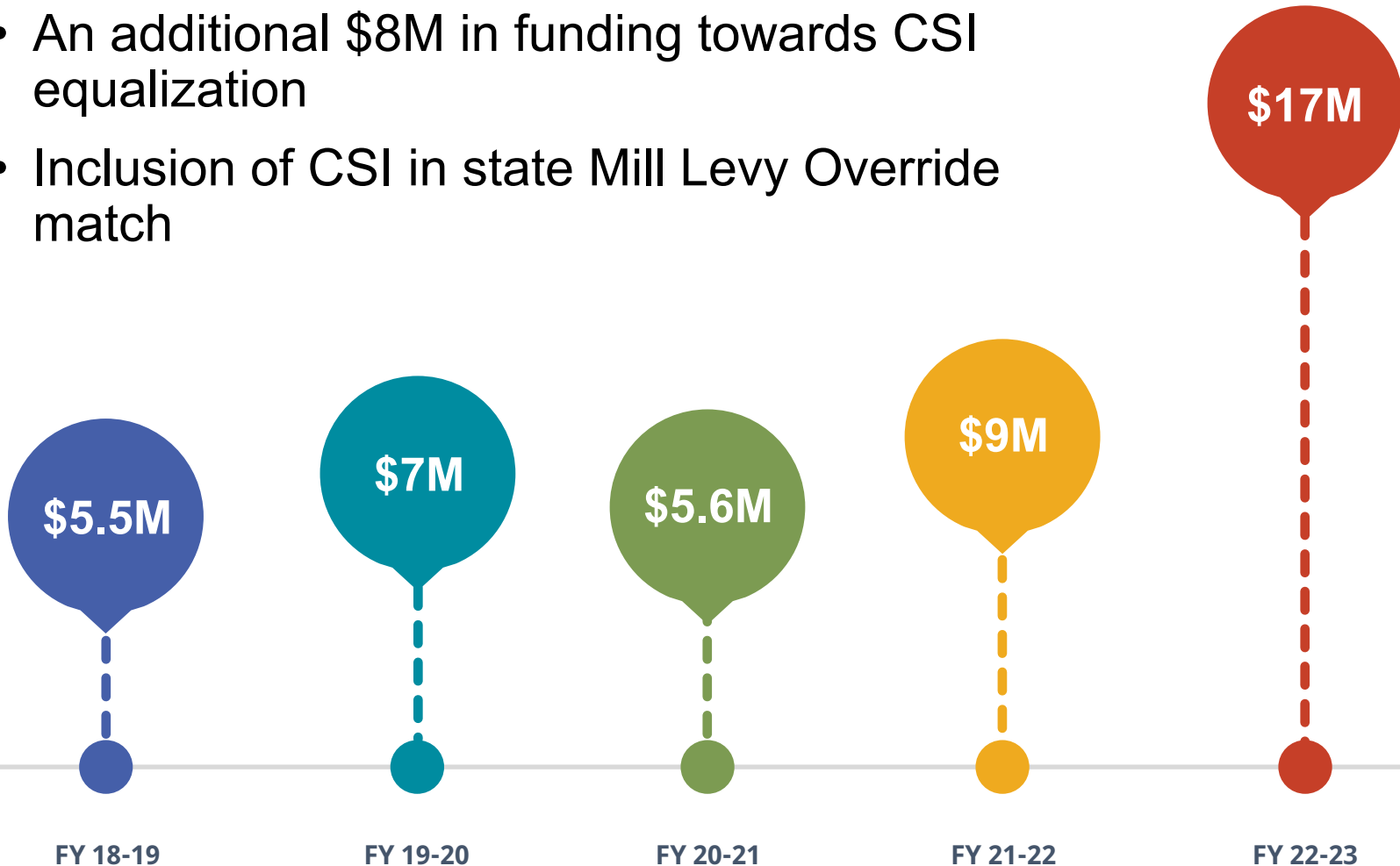


*US Census - FY20 School System Spending - \$12,612*

↑ Fully Equalized = \$42M

# Mill Levy Override Updates

- An additional \$8M in funding towards CSI equalization
- Inclusion of CSI in state Mill Levy Override match

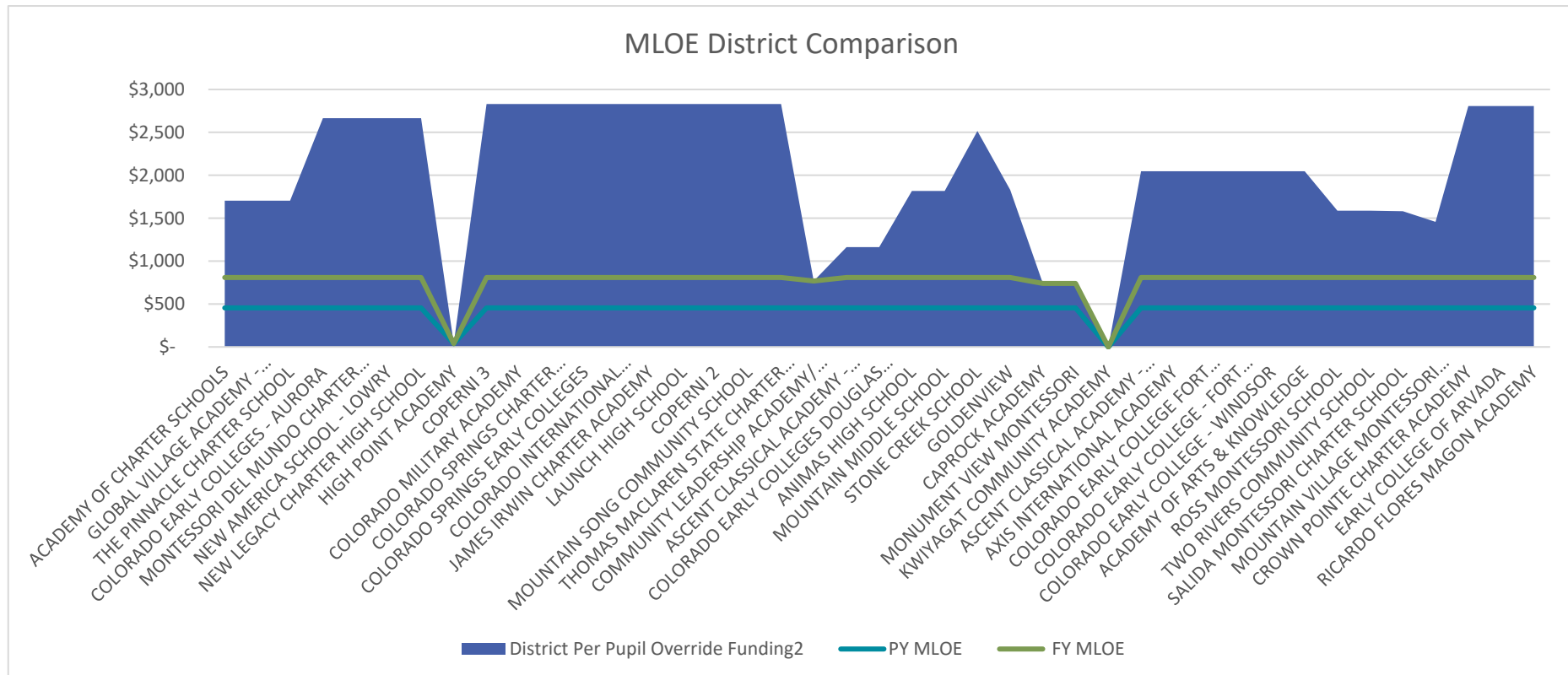




# Funding Updates - MLE

## ▪ CSI Mill Levy Equalization (MLE) Fund

- \$10M in Governor's Budget, \$7M allocated by JBC
- FY22 MLE was approx. \$455 per pupil\*
- FY23 MLE with passage of HB-1375 approx. \$810 per pupil\*





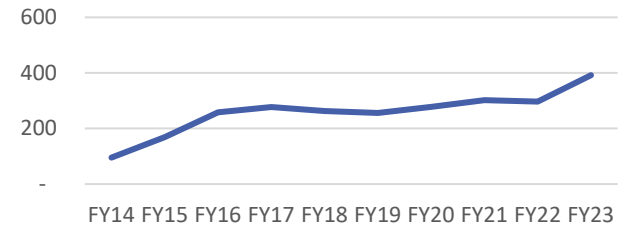
# Funding Updates

## Charter School Capital Construction

\$10M added to this charter specific funding.

- FY22 Schools were receiving \$297 per pupil
- FY23 per pupil funding is projected at \$392
- CSCC funding have increased from \$7M to \$41M in 8 years

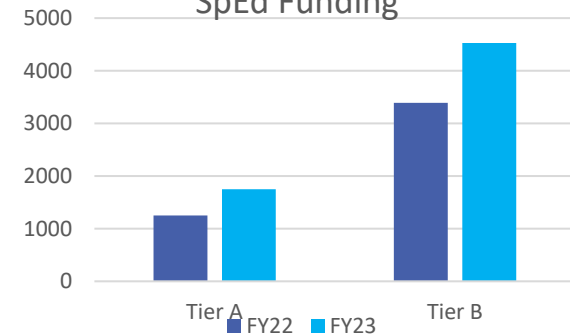
Charter School Capital Construction



## Special Education Funding

- Increased funding for special education by \$80M next year
- Tier A funding goes from \$1,250 to \$1,750
- Tier B funding goes from \$3,392 to \$4,530

SpEd Funding







# Funding Updates - Transportation

## Transportation Assistance Grant

- Available for students who attend schools with a priority improvement or turnaround plan in districts that have priority improvement, turnaround plans or are unaccredited (ex: Adams 14)
- School districts, BOCES, charter schools and community-based organizations are eligible for funding
- Timeline
  - 5/19 Release
  - 6/21 Applications Due
  - 7/1 Grants Awarded
  - 2022-23 and 2023-24 implementation
- Total funding is \$3M, or \$1,400 to \$3,500 per pupil



# Accountability Updates

Provides guidelines for resuming state accountability and considerations in response to the last two years.

- 2022 SPF will include a growth participation measure.
- CDE will calculate frameworks in 2022-23 and release ratings but is suspending automatic advancement on the accountability clock
- SBE Draft Rules - only districts/schools with a 90% total participation rate on 2022 statewide assessments can participate in the request to reconsider process
  - RtR can include request to change ratings AND/OR years on the Accountability Clock



# Special Education in Charter Schools

- Allows charters, with authorizer approval, to implement a special education enrollment preference plan
- Allows CDE to determine charter networks/collaboratives to serve as their own AU
- Gives charters a choice in its Administrative Unit (upon CDE approval) for the provision and oversight of special education services
- Provides Year 1 funding for CSI's Prospect Academy





# CSI Legislative Priorities & Strategy

- Priorities
  - Increase funding equity for CSI schools
  - Ensure CSI schools have the same access to opportunities as district peers
- Strategy: state and district-level approaches



## **During the Feedback Carousel ...**

We welcome your thoughts and feedback on CSI's legislative priorities moving into next school year.

# Feedback Carousel

---





# Feedback Carousel

- 3 topics, 10-15 minutes each
  - Legislative Reflections (Terry)
  - CARS 3.0 (Ryan)
  - Facilities (Andi)
- You will be asked to join one breakout room. Stay in that room for the entirety of this session. (The facilitators and notetakers will move between breakouts)
- Please provide feedback, clarifying questions, and recommendations