

School Discipline and Attendance - Discipline by Action (Colorado)

Last Modified on 03/14/2022 9:37 am CDT

[Report Logic](#) | [Report Editor](#) | [Generate the Report](#) | [Report Layout](#)

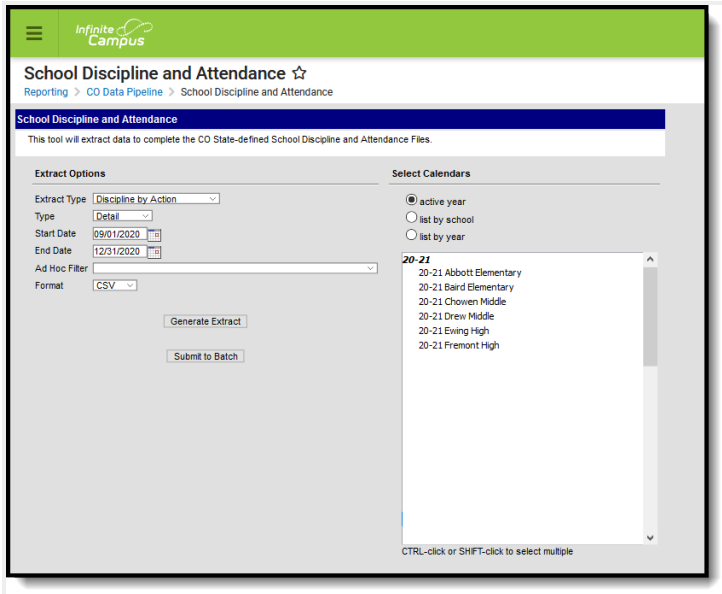
Classic View: CO State Reporting > Data Pipeline > School Discipline and Attendance > Discipline by Action

Search Terms: School Discipline and Attendance

The Discipline by Action file reports students involved in behavior events and their assigned behavior resolution for those incidents where the Behavior Resolution has a State Resolution Code of 00-11. This includes resolutions of the following:

- Removal by school personnel following a drug or weapon offense or serious bodily injury
- Removal by a hearing officer regarding likely injury
- Suspension (in-school and out-of-school) totaling less than 10 days and more than 10 days
- Expulsion with and without educational services

The **Summary Type** reports the total number of incidents or allegations (not students) made for the specified behavior event. The **Detail Type** reports student information along with the behavior details.



School Discipline and Attendance ☆
Reporting > CO Data Pipeline > School Discipline and Attendance

School Discipline and Attendance

This tool will extract data to complete the CO State-defined School Discipline and Attendance Files.

Extract Options

Extract Type: Discipline by Action
Type: Detail
Start Date: 09/01/2020
End Date: 12/31/2020
Ad Hoc Filter: [Empty]
Format: CSV

Generate Extract
Submit to Batch

Select Calendars

active year
 list by school
 list by year

20-21

- 20-21 Abbott Elementary
- 20-21 Baird Elementary
- 20-21 Chown Middle
- 20-21 Drew Middle
- 20-21 Ewing High
- 20-21 Fremont High

CTRL-click or SHIFT-click to select multiple

Discipline by Action

Notify CSI if not all files are applicable to your school. For example, if no incidents occurred involving firearms, then that file would not need to be submitted.

Report Logic

Always use state reportable for both Behavior and Resolution options (numbered) to be extracted properly into file. Others can be used for internal purposes, but both must be non-state reportable.

The **Summary Report Type** reports all records for all students enrolled in the selected calendar who meet the following:

- Enrollment Service Type is Primary (P), Partial (S) or Special Ed Services (N).
- Grade level of enrollment is 002, 004, 006, 007, 010, 020, 030, 040, 050, 060, 070, 080, 090, 100, 110, 120.
- Students who have behavior incidents that contain Behavior Events with state-mapped resolutions. All events must have a resolution with a mapped resolution in order to report EXCEPT Event Codes 18-22.
- Students who have an incident with a State Event of 12 AND a State Resolution Type of 07 are NOT reported.
- At least one day of the Behavior Incident must fall within the reporting period.
- The resolution must have occurred in the selected calendar. If a behavior event occurs on the last day of school for the 2018-19 school year, but the resolution was not assigned until the first day of the 2019-20 school year, the record reports when the 2019-20 calendar is selected.

Only one record reports for each incident. If more than one event with a resolution is tied to an incident, the resolution that has a value in the Most Severe Action field reports; if that field is not populated, the resolution with the highest eventID (most recently generated) reports.

All resolutions mapped to a state code of 06:Referred to Law Enforcement are counted, regardless of the Most Severe field being marked. This may cause more than one resolution to report for an incident.

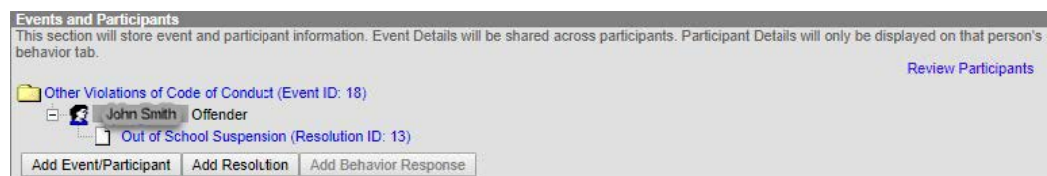
The **Detail Report Type** uses the same logic, except that it reports **one line per student for every incident that reports on the Summary Report Type**. This means the counts on the Detail Report Type DO NOT match the counts on the Summary Report Type when an incident includes more than one student.

State Exclude logic is enforced. Students are not reported, even if they meet the above requirements when:

- The Enrollment is marked as State Exclude or No Show
- The Grade level of enrollment is marked as State Exclude
- The selected Calendar is marked as State Exclude.

Each event must have valid state reportable behavior (01-16) and resolution (00-13) along with the student offender added to the Behavior Management screen.

If the behavior incident's event AND resolution are not assigned a state code, it is NOT included on the report.



Report Editor

Data Element	Description
Extract Type	Selection indicates what file generates. For this report, select Discipline by Action .
Type	Indicates whether a Summary report generates or a Detail report generates. Note that the Detail Type is NOT in a state-compliant format.
Start Date	Indicates the start date by which to report behavior events. At least one day of the Behavior Incident must fall within or on the start and end date. Dates are entered in <i>mmddyy</i> format or use the calendar icon to select a date.
End Date	Indicates the end date by which to report behavior events. At least one day of the Behavior Incident must fall within or on the start and end date. Dates are entered in <i>mmddyy</i> format or use the calendar icon to select a date.
Ad hoc Filter	When chosen, only those students included in the selected ad hoc filter are reported in the extract, if they meet the requirements of the extract.
Format	Determines the layout of the report. Choose either CSV or HTML.
Calendar Selection	Select at least one calendar from which to report student discipline information.
Report Generation	Use the Generate Extract button to display the results of the extract immediately. If there is a larger data set being reported, use the Submit to Batch option to choose when the extract generates (after or before school hours, etc.). See the Batch Queue article for more information.

Generate the Report

1. Select the **Discipline by Action** Extract Type.
2. Select either the **Summary Report Type** or the **Detail Report Type**.
3. Enter a **Start Date** and **End Date**. *First day of school and last day of school or current date*
4. If desired, select an **Ad hoc Filter** to report only those students included in that filter.
5. Select the desired **Format**, either CSV or HTML, from the dropdown list. *CSV for CSI*
6. Select at least one **Calendar** from which to report discipline records. Calendars can be chosen by active year, by school name or by year. *Current calendar year only*
7. Click the **Generate Extract** button or the **Submit to Batch** button. The report displays in the selected format.

	A	B	C	D	E	F	G
1	District Code	School Code	Behaviors/Allegations	Weapon Description	Total Number of Incidents/Allegations	Classroom Removal Incidents	In-School Suspension Inc
2	140	298	3	0	1	0	
3	140	298	18	0	1	0	
4							
5							
6							

Discipline by Action - Summary Type, CSV Format

Safety and Discipline Indicators - Discipline by Action Records:2							
District Code	School Code	Behaviors/Allegations	Weapon Description	Total Number of Incidents/Allegations	Classroom Removal Incidents	In-School Suspension Incidents	Out-of-School Suspension Incidents
0140	0298	18	0	1	0000	0000	0000
0140	0298	03	0	1	0000	0000	0001

Discipline by Action - Detail Type, HTML Format

Report Layout

Data Element	Description	Location
District Code	<p>Reports the number assigned to a school district by the state department of education.</p> <p><i>Numeric, 4 digits</i></p>	<p>System Administration > Resources > District Information > District Information > State District Number</p> <p>District.number</p>
School Code	<p>Reports the number assigned to the school building by the state department of education.</p>	<p>Student Information > General > Enrollments > State Reporting Fields > Serving District</p> <p>Enrollment.serviceDistrict</p>
	<p>When a student has a Special Education Attendance Code of 31: Administrative Unit OR 32: State-Operated Program, the four-digit code reports from the Serving District field on the student's most recent enrollment record as of the entered effective date, the end date of report</p>	<p>Student Information > General > Enrollments > Special Education Fields > Service Agency/Facility Code</p> <p>Enrollment.serviceFacility</p>

Data Element	Description	Location
	<p>generation, or the most recent enrollment closest to the end date of report generation.</p> <p>For all other students, the student's latest enrollment where the Special Education Start Date is populated and at least one active Special Education date falls within the reporting period or the most recent enrollment closest to the end date of report generation.</p> <ul style="list-style-type: none"> • The Service Agency/Facility code reports, if populated. • If the Service Agency/Facility Code field is not populated, the School of Accountability reports, if populated. • If the School of Accountability field is not populated, the School Number of the student's most current enrollment or most recent enrollment as of the Effective Date or End Date of report generation. • If all of these fields are not populated, a value of 0000 reports. <p><i>Numeric, 4 digits</i></p>	<p>Student Information > General > Enrollments > State Reporting Fields > School of Accountability</p> <p>Enrollment.residentSchool</p> <hr/> <p>System Administration > Resources > School > School Editor > State School Number</p> <p>School.number</p>

Data Element	Description	Location
Behaviors/Allegations	<p>Reports the state event code assigned to the Behavior Incident where the most serious event is set to 01-17.</p> <p><i>Numeric, 2 digits</i></p>	<p>Behavior > Behavior Event > Event Code</p> <p>Behavior > Admin > Event Types > Behavior Event Type Detail > State Event Code</p> <p>Behavior.stateEventCode</p> <hr/> <p>Behavior > Behavior Management > Most Serious Event</p> <p>BehaviorIncident.mostSeriousEvent</p>
Weapon Description	<p>This field only reports if a Behavior event code within the range of 01-17 is selected.</p> <p>Reports the description of the weapon used in the incident.</p> <ul style="list-style-type: none"> • Reports 1 if weapon was used (GFSA Weapon field is 04). • Reports 0 for all other values. • Reports blank when the Most Serious Event does not equal 01-17. <p><i>Numeric, 1 digit</i></p>	<p>Behavior > Behavior Management > Add Event/Participant > Event and Participant(s) Details</p> <p>Behavior.weapon</p> <hr/> <p>Behavior > Behavior Management > Most Serious Event</p> <p>BehaviorIncident.mostSeriousEvent</p>
Total Number of Incidents/Allegations	<p>Reports the total count of incidents and allegations.</p> <p>Reports a value of 1 when the student has a behavior event with a State Resolution Code of 01-09 or 11 when the</p>	<p>Behavior > Behavior Management > Events and Participants > Resolutions</p> <p>Behavior > Behavior Management > Most Serious Action</p> <p>Calculated value</p>

Data Element	Description	Location
<p>Incidents should be less than or equal to the number of resulting actions reported on the Discipline by Student Demographics file.</p> <p>Report Allegations for CRDC purposes</p>	<p>Behaviors/Allegations field reports a value of 01-17.</p> <p>Reports a value of 0 for all other values.</p> <p>The Detail Report always reports a value of 0.</p> <p><i>Numeric, 4 digits</i></p>	
<p>Classroom Removal of Incidents</p>	<p>Reports a value of 1 when the student has a reportable behavior event where the most serious action has a State Resolution Code of 01: Classroom Suspension/Teacher Removal.</p>	<p>Behavior > Behavior Management > Events and Participants > Resolutions > 01: Classroom Suspension/Teacher Removal</p> <p>Calculated value</p>
	<p>Otherwise, reports a value of 0.</p> <p><i>Numeric, 4 digits</i></p>	<p>Behavior > Behavior Management > Most Serious Event</p> <p>BehaviorIncident.mostSeriousEvent</p>
<p>In-School Suspension Incidents</p>	<p>Reports a value of 2 when the student has a reportable behavior event where the most serious action has a State Resolution Code of 02: In School Suspension.</p>	<p>Behavior > Behavior Management > Events and Participants > Resolutions > 02: In School Suspension</p> <p>Calculated value</p>
	<p>Otherwise, reports a value of 0.</p> <p><i>Numeric, 4 digits</i></p>	<p>Behavior > Behavior Management > Most Serious Action</p> <p>BehaviorIncident.mostSeriousAction</p>
<p>Out-of-School Suspensions</p>	<p>Reports a value of 3 when the student has a reportable behavior event where the most serious action has a State Resolution Code of 03: Out of School Suspension.</p>	<p>Behavior > Behavior Management > Events and Participants > Resolutions > 03: Out of School Suspension</p> <p>Calculated value</p>

Data Element	Description	Location
	<p>Otherwise, reports a value of 0.</p> <p><i>Numeric, 4 digits</i></p>	<p>Behavior > Behavior Management > Most Serious Action</p> <p>BehaviorIncident.mostSeriousAction</p>
<p>Expulsion Incidents</p>	<p>Reports a value of 1 when the student has a reportable behavior event where the most serious action has a State Resolution Code of the following:</p> <ul style="list-style-type: none"> • 04: Out of School Suspension • 05: Expulsion and Referred to Alternate Program • 08: Expulsion and Referred to Alt by Hearing Officer • 11: Unilateral Removal by School Personnel). <p>Otherwise, reports a value of 0.</p> <p><i>Numeric, 4 digits</i></p>	<p>Behavior > Behavior Management > Events and Participants > Resolutions > 04: Expulsion, 05: Expulsion and Referred to Alternate Program, 08: Expulsion and Referred to Alt by Hearing Officer, 11: Unilateral Removal by School Personnel</p> <p>Calculated value</p>
		<p>Behavior > Behavior Management > Most Serious Action</p> <p>BehaviorIncident.mostSeriousAction</p>
<p>Law Enforcement Referral Incidents</p>	<p>Reports a value of 1 when the student has a reportable behavior event where the most serious action has a State Resolution Code of 06: Referred to Law Enforcement.</p> <p>If the State Event Code is 18-22, those events are not reported.</p> <p>Otherwise, reports a value of 0.</p> <p><i>Numeric, 4 digits</i></p>	<p>Behavior > Behavior Management > Events and Participants > Resolutions > 06: Referred to Law Enforcement</p> <p>Calculated value</p>
		<p>Behavior > Behavior Management > Most Serious Action</p> <p>BehaviorIncident.mostSeriousAction</p>

Suspensions and Expulsions must of Special Education students must match the number reported in the SPED Discipline Collection

Event and resolution must occur within the current reporting school year to be reportable this year.

Data Element	Description	Location
<p>Other Action Taken Incidents</p>	<p>Reports a value of 1 when the student has a reportable behavior event where the most serious action has a State Resolution Code of the following:</p> <ul style="list-style-type: none"> • 07: Other Action Taken • 09: Removal Other, Death, Incarcerated, etc.) <p>Otherwise, reports a value of 0.</p> <p>The value reported here matches the value reported for the Other Actions field on the Discipline by Student Demographics report.</p> <p><i>Numeric, 4 digits</i></p>	<p>Behavior > Behavior Management > Events and Participants > Resolutions > 07: Other Action Taken, 09: Removal Other, Death, Incarcerated, etc.</p> <p>Calculated value</p> <hr/> <p>Behavior > Behavior Management > Most Serious Action</p> <p>BehaviorIncident.mostSeriousAction</p>
<p>LASID</p>	<p>Reports the student's number.</p> <p><i>Numeric, 10 digits</i></p>	<p>Census > People > Demographics > Student Number</p> <p>Person.studentNumber</p>
<p>Incident ID</p>	<p>Reports the incident ID.</p> <p>This field only reports on the Detail Type Report.</p> <p><i>Numeric, 10 digits</i></p>	<p>Behavior > Behavior Management > Incident ID</p> <p>BehaviorIncident.incidentID</p>
<p>Most Serious</p>	<p>When the Resolution being reported is marked as Most Serious, this field reports Yes.</p> <p>Otherwise, this field reports No.</p> <p>This field only reports on the Detail Type Report.</p>	<p>Behavior > Behavior Management > Most Serious Action</p> <p>BehaviorIncident.mostSeriousAction</p>

Data Element	Description	Location
	Alphanumeric, Yes or No	

School Discipline and Attendance - Firearm (GFSA) Discipline (Colorado)

Last Modified on 03/14/2022 9:37 am CDT

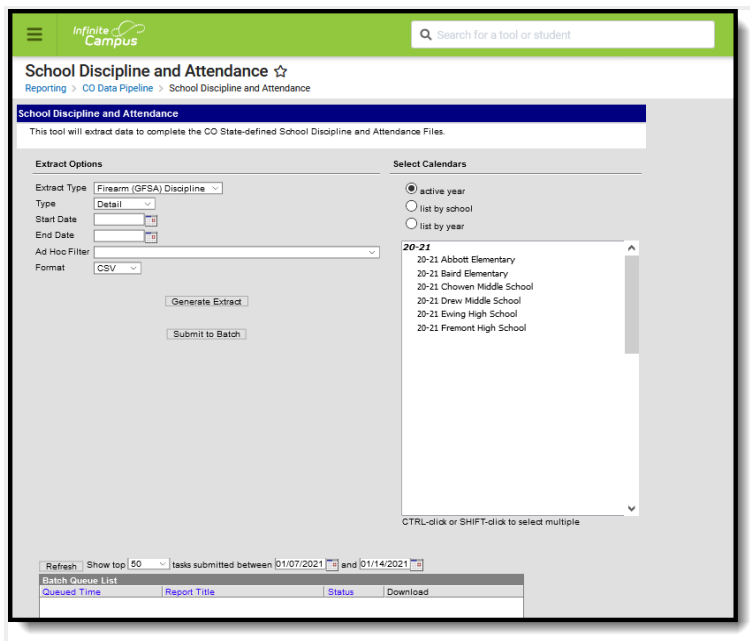
[Report Logic](#) | [Report Editor](#) | [Generate the Report](#) | [Report Layout](#)

Classic View: [CO State Reporting](#) > [Data Pipeline](#) > [School Discipline and Attendance](#) > [Firearm \(GFSA\) Discipline](#)

Incidents involving firearms must have occurred on school grounds to be reported in this file.

Search Terms: School Discipline and Attendance

The Firearm (GFSA) Discipline file reports students involved in behavior events who have a Behavior Event State Code of 05: Dangerous Weapon. A record reports for each type of firearm - 01: Handgun, 02: Rifle/Shotgun, 03: Other Firearms, 04: Multiple Firearms - and has a resolution (where appropriate) of 00, 04, 05, 07, 08-11.



Firearm (GFSA) Discipline

Report Logic

A record reports for all students enrolled in the selected calendar who meet the following:

- Enrollment Service Type is Primary (P), Partial (S) or Special Ed Services (N).
- Grade level of enrollment is 002, 004, 006, 007, 010, 020, 030, 040, 050, 060, 070, 080, 090, 100, 110, 120
- The student has a Behavior Event with a State Code of 05: Dangerous Weapon.
- A record reports for each type of firearm (01: Handgun, 02: Rifle/Shotgun, 03: Other Firearms).
- The student has a Behavior Resolution to the Behavior Event of 00, 04, 05, 07, 08-11.

A record and appropriate count reports for each individual student who has an applicable behavior incident where at least one day falls within the reporting period. Students may have more than one record (possibility of 6 total records per students).

If more than one student is tied to an incident, each student reports. See the previous information for rules on reporting multiple event per student.

State Exclude logic is enforced. Students are not reported, even if they meet the above requirements when:

- The Enrollment is marked as State Exclude or No Show
- The Grade level of enrollment is marked as State Exclude
- The selected Calendar is marked as State Exclude.

Report Editor

Data Element	Description
Extract Type	Selection indicates what file generates. For this report, select Firearm (GFSA) .
Type	Indicates whether a Summary report generates or a Detail report generates.
Start Date	Indicates the start date by which to report behavior events. At least one day of the Behavior Incident must fall within or on the start and end date. Dates are entered in <i>mmddyy</i> format or use the calendar icon to select a date.
End Date	Indicates the end date by which to report behavior events. At least one day of the Behavior Incident must fall within or on the start and end date. Dates are entered in <i>mmddyy</i> format or use the calendar icon to select a date.

Data Element	Description
Ad hoc Filter	When chosen, only those students included in the selected ad hoc filter are reported in the extract, if they meet the requirements of the extract.
Format	Determines the layout of the report. Choose either CSV or HTML.
Calendar Selection	Select at least one calendar from which to report student discipline information.
Report Generation	Use the Generate Extract button to display the results of the extract immediately. If there is a larger data set being reported, use the Submit to Batch option to choose when the extract generates (after or before school hours, etc.). See the Batch Queue article for more information.

Generate the Report

1. Select the **Firearm (GFSA) Discipline Extract Type**. Notify CSI if no students have firearm incident
2. Select either the **Summary Report Type** or the **Detail Report Type**.
3. Enter a **Start Date** and **End Date**. First and last day of school or current day
4. If desired, select an *Ad hoc Filter*.
5. Select the desired **Format**, either CSV or HTML, from the dropdown list.
6. Select at least one **Calendar** from which to report discipline records. Calendars can be chosen by active year, by school name or by year. Only current calendar year
7. Click the **Generate Extract** button or the **Submit to Batch** button. The report displays in the selected format. One record per school and firearm weapon with counts of actions taken

	A	B	C	D	E	F	G	H	I	J	K	L	M	N	O					
1	District	Cc	School	Co	Grade	Lev	Firearm	W	IDEA/Spe	Brought	o	Students	Students	Students	Students	Students	Students	Students	Removed	O
2		140	5224	110	1	0	1	1	1	0	0	0	0	0	0	0	0	0	0	0
3		140	5224	120	3	0	1	1	1	0	0	0	0	0	0	0	0	0	0	0
4																				
5																				

Firearm

(GFSA) Discipline Report - CSV Format

Safety and Discipline Indicators - Firearm (GFSA) Discipline Records:2										
District Code	School Code	Grade Level	Firearm Weapons	IDEA/Special Education	Brought or Possessed at School	Students Expelled	Students Expelled Less Than One Year	Students Referred and Expelled Less Than One Year	Students Exp	Least One
0140	0298	090	02	0	02	01	01	00		00
0140	0298	120	01	0	03	01	01	00		00

Firearm (GFSA) Discipline Report - HTML Format

Report Layout

Data Element	Description	Location
<p>District Code</p>	<p>Reports the number assigned to a school district by the state department of education.</p> <p><i>Numeric, 4 digits</i></p>	<p>System Administration > Resources > District Information > District Information > State District Number</p> <p>District.number</p>
<p>School Code</p>	<p>Reports the number assigned to the school building by the state department of education.</p> <p>When a student has a Special Education Attendance Code of 31: Administrative Unit OR 32: State-Operated Program, the four-digit code reports from the Serving District field on the student' most recent enrollment record as of the entered effective date, the end date of report generation, or the most recent enrollment closest to the end date of report generation.</p> <p>For all other students, the student's latest enrollment where the Special Education Start Date is populated and at least one active Special Education date falls within the reporting period or the most recent enrollment closest to the end date of report generation.</p> <ul style="list-style-type: none"> • The Service Agency/Facility code reports, if populated. • If the Service Agency/Facility Code field is not populated, the School 	<p>Student Information > General > Enrollments > State Reporting Fields > Serving District</p> <p>Enrollment.serviceDistrict</p> <hr/> <p>Student Information > General > Enrollments > Special Education Fields > Service Agency/Facility Code</p> <p>Enrollment.serviceFacility</p> <hr/> <p>Student Information > General > Enrollments > State Reporting Fields > School of Accountability</p> <p>Enrollment.residentSchool</p> <hr/> <p>System Administration > Resources > School > School Editor > State School Number</p> <p>School.number</p>

Data Element	Description	Location
	<p>of Accountability reports, if populated.</p> <ul style="list-style-type: none"> • If the School of Accountability field is not populated, the School Number of the student's most current enrollment or most recent enrollment as of the Effective Date or End Date of report generation. • If all of these fields are not populated, a value of 0000 reports. <p><i>Numeric, 4 digits</i></p>	
<p>Grade Level</p>	<p>Reports the student's grade level for the action report.</p> <p><i>Numeric, 3 digits</i></p>	<p>Student Information > General > Enrollments > General Enrollment Information > Grade</p> <p>Enrollment.grade</p>
<p>Firearm Weapons</p>	<p>Reports the weapon associated with the event.</p> <ul style="list-style-type: none"> • Reports 01 when the Event Code is 05: Dangerous Weapons and the GSFA is 01: Handgun. • Reports 02 when the Event Code is 05: Dangerous Weapons and the GSFA is 02: Rifle/Shotgun. • Reports 03 when the Event Code is 05: Dangerous Weapons and the GSFA is 03: Other Firearms. • Reports 04 when the Event Code is 05: Dangerous Weapons and the GSFA is 01: Handgun, 02: Rifle/Shotgun, or 03: Other Firearms (multiple firearms). 	<p>Behavior > Behavior Event > GFSA Weapon</p> <p>BehaviorEvent.weaponCode</p>

Data Element	Description	Location
	<i>Numeric, 2 digits</i>	
<p>IDEA/Special Education</p> <p>All students with a disability and on an IEP must be reported with a 1 flag.</p>	<p>Reports a value when the student is considered a Special Education student.</p> <p>A value of 1 reports when:</p> <ul style="list-style-type: none"> The Behavior Incident Date falls within the Special Education Start and Exit Dates. The student has an active locked IEP at the time of the incident. <p>Otherwise, reports a value of 0.</p> <p><i>Numeric, 1 digit</i></p>	<p>Student Information > Special Education > Documents > IEP</p> <hr/> <p>Student Information > General > Enrollments > Special Ed Fields > Special Ed Start Date, Special Ed Exit Date</p> <p>Enrollment.specialEdStartDate Enrollment.specialEdExitDate</p> <hr/> <p>Behavior > Behavior > Management > Date of Incident</p> <p>BehaviorEvent.date</p> <hr/> <p>Behavior > Behavior < Management > Resolution Start Date</p> <p>BehaviorResolution.startDate</p>
<p>Brought or Possessed at School</p>	<p>Reports the number of students who brought or possessed a firearm while at school (Behavior Event has an Incident Type = 05: Dangerous Weapons).</p> <p>Otherwise, a value of 0 reports.</p> <p><i>Numeric, 2 digits</i></p>	<p>Behavior > Behavior Management > Resolution</p>
<p>Students Expelled</p>	<p>Reports the number of students who were expelled for bringing or possessing firearms to school.</p> <p>Report a value of 1 when:</p>	<p>Behavior > Behavior Management > Event Type > 05: Dangerous Weapons</p> <p>Behavior > Behavior Management > Resolution</p>

Data Element	Description	Location
	<ul style="list-style-type: none"> • Incident Type is 05: Dangerous Weapons AND • Resolution Code is one of the following: <ul style="list-style-type: none"> ○ 04: Expulsion ○ 05: Expulsion and Referred to Alternate Program ○ 08: Expulsion and Referred to Alternate Program by Hearing Officer ○ 11: Unilateral Removal by School Personnel <p>Otherwise, reports a value of 0.</p> <p><i>Numeric, 2 digits</i></p>	
<p>Students Expelled Less Than One Year</p>	<p>Reports the number of students who were expelled for less than the mandatory one calendar year term.</p> <p>Length of time is determined by the timestamp start date on the Behavior Resolution record and the End Date. If the length of expulsion is less than 364 days, the student is counted.</p> <p>Reports a value of 1 when:</p> <ul style="list-style-type: none"> • Incident Type is 05: Dangerous Weapons AND • Resolution Code is one of the following: <ul style="list-style-type: none"> ○ 04: Expulsion ○ 05: Expulsion and Referred to Alternate Program ○ 08: Expulsion and Referred to Alternate Program by Hearing Officer 	<p>Behavior > Behavior Management > Event Type > 05: Dangerous Weapons</p> <p>Behavior > Behavior Management > Resolution > 04, 05, 08, 11</p>

Data Element	Description	Location
	<ul style="list-style-type: none"> ○ 11: Unilateral Removal by School Personnel <p>Otherwise, reports a value of 0.</p> <p><i>Numeric, 2 digits</i></p>	
<p>Students Referred and Expelled Less Than One Year</p>	<p>Reports the number of students expelled for less than the mandatory one calendar year that resulted in a referral to an alternative school or program.</p> <p>Length of time is determined by the timestamp start date on the Behavior Resolution record and the End Date. If the length of expulsion is less than 364 days, the student is counted.</p> <p>Reports a value of 1 when:</p> <ul style="list-style-type: none"> • Incident Type is 05: Dangerous Weapons AND • Resolution Code is 05: Expulsion and Referred to Alternate Program AND • Student was expelled less than one year. <p>Otherwise, reports a value of 0.</p> <p><i>Numeric, 2 digits</i></p>	<p>Behavior > Behavior Management > Event Type > 05: Dangerous Weapons</p> <p>Behavior > Behavior Management > Resolution</p>
<p>Students Expelled at Least One Year</p>	<p>Reports the number of students expelled for at least the mandatory one calendar year.</p> <p>Length of time is determined by the timestamp start date on the Behavior Resolution record and the End Date. If the length of expulsion is less than 364 days, the student is counted.</p> <p>Reports a value of 1 when:</p>	<p>Behavior > Behavior Management > Event Type > 05: Dangerous Weapons</p> <p>Behavior > Behavior Management > Resolution > 05</p>

Data Element	Description	Location
	<ul style="list-style-type: none"> • Incident Type is 05: Dangerous Weapons AND • Resolution Code is 05: Expulsion and Referred to Alternate Program AND • Student was expelled for one year or more. <p>Otherwise, reports a value of 0.</p> <p><i>Numeric, 2 digits</i></p>	
<p>Students Referred and Expelled At Least One Year</p>	<p>Reports the number of students expelled for the mandatory one calendar year that resulted in a referral to an alternative school or program.</p> <p>Length of time is determined by the timestamp start date on the Behavior Resolution record and the End Date. If the length of expulsion is equal to or more than 364 days, the student is counted.</p> <p>Reports a value of 1 when:</p> <ul style="list-style-type: none"> • Incident Type is 05: Dangerous Weapons AND • Resolution Code is 05: Expulsion and Referred to Alternate Program AND • Student was expelled for one year or more. <p>Otherwise, reports a value of 0.</p> <p><i>Numeric, 2 digits</i></p>	<p>Behavior > Behavior Management > Event Type > 05: Dangerous Weapons</p> <p>Behavior > Behavior Management > Resolution > 05</p>
<p>Students Not Disciplined</p>	<p>Reports the number of students who were not disciplined for firearms brought or possessed at school.</p> <p>Reports a value of 1 when:</p>	<p>Behavior > Behavior Management > Event Type > 05: Dangerous Weapons</p> <p>Behavior > Behavior Management > Resolution > 00, 10</p>

Data Element	Description	Location
	<ul style="list-style-type: none"> • Incident Type is 05: Dangerous Weapons AND • Resolution Code is 00: Not Applicable or 10: No Action Taken <p>Otherwise, reports a value of 0.</p> <p><i>Numeric, 2 digits</i></p>	
<p>Students Disciplined Other</p>	<p>Reports the number of students where the resolution to the behavior incident resulted in a disciplinary action other than expulsion (i.e., suspension, classroom removal, etc.) for firearms brought or possessed at school.</p> <p>Reports a value of 1 when:</p> <ul style="list-style-type: none"> • Incident Type is 05: Dangerous Weapons AND • Resolution Code is 01, 02, 03, 06 or 07. <p>Otherwise, reports a value of 0.</p> <p><i>Numeric, 2 digits</i></p>	<p>Behavior > Behavior Management > Event Type > 05: Dangerous Weapons</p> <p>Behavior > Behavior Management > Resolution > 07</p>
<p>Students Removed Other</p>	<p>Reports the number of students that resulted in another type of removal from school not listed above (i.e., death, incarcerated, etc.) for firearms brought or possessed at school.</p> <p>Reports a value of 1 when:</p> <ul style="list-style-type: none"> • Incident Type is 05: Dangerous Weapons AND • Resolution Code is 09: Removal Other, Death, Incarcerated, etc. 	<p>Behavior > Behavior Management > Event Type > 05: Dangerous Weapons</p> <p>Behavior > Behavior Management > Resolution</p>

Data Element	Description	Location
	Otherwise, reports a value of 0. <i>Numeric, 2 digits</i>	
LASID	Reports the student's local student number. <i>Numeric 10 digits</i>	Census > People > Demographics > Student Number Person.studentNumber

School Discipline and Attendance - Student Demographics (Colorado)

Last Modified on 03/14/2022 9:37 am CDT

[Report Logic](#) | [Report Editor](#) | [Generate the Report](#) | [Report Layout](#)

Classic View: [CO State Reporting > Data Pipeline > School Discipline and Attendance > Student Demographics](#)

Search Terms: [School Discipline and Attendance](#)

The Student Demographics File reports ALL students involved in behavior incidents that are reported in the [Discipline by Action File](#). One record reports for each student with an applicable behavior incident where at least one day falls within the reporting period (Start Date - End Date, entered on the report editor).

Data reports for each unique combination in the following categories:

- Race/Ethnicity
- Gender
- Grade Level
- Special Education Involvement
- 504 Status
- ELL Status

Students flagged as in Special Education for School Discipline will be compared to the number of students reported in SPED Discipline. If using Alpine for Special Education, ensure that you create a Mock IEP by completing the Special Ed Fields on the Enrollment tab. Also the incident must have occurred within the Special Education Date Ranges to be applicable.

The Summary Type reports the total number of students for the specified behavior/allegation type. The Detail Type reports each student's behavior event/resolutions by event.

Student Demographics Editor

Report Logic

The **Summary Report Type** reports a record reports for each individual student involved in Behavior Incidents that report in the [Discipline by Action](#) Extract, where at least one day falls within the reporting period. Only one record reports for each student per incident. If there are no discipline incidents for the student, a record is not reported.

If a student has more than one event with a resolution tied to an incident, the resolution that has a value in the Most Serious Action field reports; if that field is not populated, the resolution with the highest eventID (most recently generated). If more than one student is tied to an incident, each student reports.

- Enrollment Service Type is Primary (P), Partial (S) or Special Ed Services (N).
- Grade level of enrollment is 002, 004, 006, 007, 010, 020, 030, 040, 050, 060, 070, 080, 090, 100, 110, 120.
- Behavior incidents contain Behavior Events with state-mapped resolutions. All events must have a resolution with a mapped resolution in order to report EXCEPT Event Codes 18-22.
- At least one day of the Behavior Incident must fall within the reporting period.
- The resolution must have occurred in the selected calendar. If a behavior event occurs on the last day of school for the 2018-19 school year, but the resolution was not assigned until the first day of the 2019-20 school year, the record reports when the 2019-20 calendar is selected.

When the role assigned to a participant is Victim, a resolution is NOT required for the following fields:

- Students Reported as Harassed or Bullied on the Basis of Sex (field 24)
- Students Reported as Harassed or Bullied on the Basis of Race or Color of National Origin (field 25)
- Students Reported as Harassed or Bullied on the Basis of Disability (field 26)

All resolutions mapped to a state code of 06:Referred to Law Enforcement are counted, regardless of the Most Severe field being marked. This may cause more than one resolution to report for an incident.

The **Detail Report Type** uses the same logic, except that it reports ALL resolutions tied to reportable incidents, regardless if they are marked as Most Serious or not, **one line per student for every resolution that reports on the Summary Report Type.** This means the counts on the Detail Report Type DO NOT match the counts on the Summary Report Type when an incident includes more than one student.

Students are not included when:

- The enrollment is marked as state exclude or no show.
- The grade level of enrollment is marked as state exclude.
- The calendar of enrollment is marked as state exclude.

Students reported as having a State Event code, but either no resolution or a non-State Resolution code will flag for errors.

Report Editor

Data Element	Description
Extract Type	Selection indicates what file generates. <ul style="list-style-type: none"> • Discipline by Action • Firearm (GFSA) • Attendance Data File • Student Demographics
Type	Indicates whether a Summary report generates or a Detail report generates. Note that the Detail Type is NOT in a state-compliant format.
Start Date	Indicates the start date by which to report behavior events. At least one day of the Behavior Incident must fall within or on the start and end date. Dates are entered in <i>mmdyy</i> format or use the calendar icon to select a date.
End Date	Indicates the end date by which to report behavior events. At least one day of the Behavior Incident must fall within or on the start and end date. Dates are entered in <i>mmdyy</i> format or use the calendar icon to select a date.

Data Element	Description
Ad hoc Filter	When chosen, only those students included in the selected ad hoc filter are reported in the extract, if they meet the requirements of the extract.
Format	Determines the layout of the report. Choose either CSV or HTML.
Calendar Selection	Select at least one calendar from which to report student discipline information.
Report Generation	Use the Generate Extract button to display the results of the extract immediately. If there is a larger data set being reported, use the Submit to Batch option to choose when the extract generates (after or before school hours, etc.). See the Batch Queue article for more information.

Generate the Report

1. Select the **Student Demographics** Extract Type.
2. Select either the **Summary Report Type** or the **Detail Report Type**.
3. Enter a **Start Date** and **End Date**. *First and last day of school or current date*
4. If desired, select an **Ad hoc Filter** to return only students included in that filter.
5. Select the desired **Format**, either CSV or HTML, from the dropdown list. *CSV*
6. Select at least one **Calendar** from which to report discipline records. Calendars can be chosen by active year, by school name or by year. *Only current year*
7. Click the **Generate Extract** button or the **Submit to Batch** button. The report displays in the selected format.

	A	B	C	D	E	F	G	H	I	J	K	L	M	
1	District Cc	School Co	Ethnicity/	Gender	Grade Lev	Disability,	Section 50	LEP Status	Unduplica	Classroom	In-School	Received	Received	To
2	123	350	5	1	110	0	0	0	1	0	0	0	0	0
3	123	515	5	2	110	0	0	0	3	0	3	0	0	0
4	123	169	4	1	120	0	0	1	1	0	0	0	0	0
5	123	186	5	2	90	0	1	1	1	0	0	0	0	0
6	123	1475	5	1	120	0	0	0	1	0	0	0	0	0

Student Demographics - CSV Format

District Code	School Code	Ethnicity/Race	Gender	Grade Level	Disability/IDEA Status	Section 504 Status	LEP Status	Unduplicated Count Of Students Disciplined	Classroom Removals	In-School Suspensions	Received Only One Out-Of-School Suspension	Received More Than One Out-Of-School Suspension	Total Out-Of-School Suspensions	Expulsions With Educational Services	Exp Wi Educ Ser
0123	0125	05	01	110	0	0	0	0001	0000	0000	0000	0000	0000	0000	0000
0123	0125	05	02	110	0	0	0	0003	0000	0003	0000	0000	0000	0000	0000
0123	0548	04	01	120	0	0	1	0001	0000	0000	0000	0000	0000	0000	0000
0123	0548	05	02	090	0	1	1	0001	0000	0000	0000	0000	0000	0000	0000
0123	7854	05	01	120	0	0	0	0001	0000	0000	0000	0000	0000	0000	0000

Student Demographics - HTML Format

Report Layout

Data Elements	Description	Location
<p>District Code</p>	<p>Reports the State District Number.</p> <p><i>Numeric, 4 digits</i></p>	<p>System Administration > Resources > District Information > State District Number</p> <p>District.number</p>
<p>School Code</p>	<p>Reports the number assigned to the school building by the state department of education.</p> <p>When a student has a Special Education Attendance Code of 31: Administrative Unit OR 32: State-Operated Program, the four-digit code reports from the Serving District field on the student' most recent enrollment record as of the entered effective date, the end date of report generation, or the most recent enrollment closest to the end date of report generation.</p> <p>For all other students, the student's latest enrollment where the Special Education Start Date is populated and at least one active Special Education date falls within the reporting period or the most recent enrollment closest to the end date of report generation.</p> <ul style="list-style-type: none"> The Service Agency/Facility 	<p>Student Information > General > Enrollments > State Reporting Fields > Serving District</p> <p>Enrollment.serviceDistrict</p> <hr/> <p>Student Information > General > Enrollments > Special Education Fields > Service Agency/Facility Code</p> <p>Enrollment.serviceFacility</p> <hr/> <p>Student Information > General > Enrollments > State Reporting Fields > School of Accountability</p> <p>Enrollment.residentSchool</p> <hr/> <p>System Administration > Resources > School > School Editor > State School Number</p> <p>School.number</p>

Data Elements	Description	Location
	<p>code reports, if populated.</p> <ul style="list-style-type: none"> • If the Service Agency/Facility Code field is not populated, the School of Accountability reports, if populated. • If the School of Accountability field is not populated, the School Number of the student's most current enrollment or most recent enrollment as of the Effective Date or End Date of report generation. • If all of these fields are not populated, a value of 0000 reports. <p><i>Numeric, 4 digits</i></p>	
<p>Ethnicity/Race</p>	<p>Reports the student's race/ethnicity code:</p> <ul style="list-style-type: none"> • 01 - American Indian or Alaska Native • 02 - Asian • 03- Black (not Hispanic) • 04 - Hispanic • 05 - White (not Hispanic) • 06 - Native Hawaiian or other Pacific Islander • 07 - Multiple races <p><i>Numeric, 2 digits</i></p>	<p>Census > People > Demographics > Person Information > Race/Ethnicity</p> <p>Identity.raceEthnicity</p>

Data Elements	Description	Location
<p>Gender</p>	<p>Reports the gender assigned to the student when the Report Legal Gender checkbox is marked.</p> <ul style="list-style-type: none"> • 01 - Female • 02 - Male <p><i>Numeric, 2 digits</i></p>	<p>Census > People > Demographics > Person Information > Gender</p> <p>Identity.gender</p>
<p>Grade Level</p>	<p>Reports the grade level of the student for the reported action.</p> <ul style="list-style-type: none"> • 004 - Pre-Kindergarten (preschool) • 006: Half Day Kindergarten • 007 - Full Day Kindergarten • 010 - Grade 1 • 020 - Grade 2 • 030 - Grade 3 • 040 - Grade 4 • 050 - Grade 5 • 060 - Grade 6 • 070 - Grade 7 • 080 - Grade 8 • 090 - Grade 9 • 100 - Grade 10 • 110 - Grade 11 • 120 - Grade 12 <p><i>Numeric, 3 digits</i></p>	<p>Student Information > General > Enrollments > General Enrollment Information > Grade</p> <p>Enrollment.grade</p> <hr/> <p>System Administration > Calendar > Calendar > Grade Levels > State Grade Level</p>
<p>Disability/IDEA Status</p> <p>All students with a disability and on an IEP must be reported with a 1 flag.</p>	<p>Indicates if the record is for an IDEA/Special Education student.</p> <p>Reports a value of 1 when:</p> <ul style="list-style-type: none"> • The Behavior Incident Date falls within the Special 	<p>Student Information > Enrollments > Special Ed Fields > Special Ed Start Date, Special Ed Exit Date</p> <p>Enrollment.spedStartDate Enrollment.spedExitDate</p>

Data Elements	Description	Location
	<p>Education Start and Exit Dates on the Enrollment Record</p> <ul style="list-style-type: none"> The student has an active locked IEP at the time of the incident. <p>Otherwise, reports a value of 0.</p> <p><i>Numeric, 1 digit</i></p>	<p>Student Information > Special Education > Documents > IEP</p> <hr/> <p>Behavior > Behavior > Management > Date of Incident</p> <p>BehaviorEvent.date</p> <hr/> <p>Behavior > Behavior < Management > Resolution Start Date</p> <p>BehaviorResolution.startDate</p>
Section 504 Status	<p>Indicates if the record is for students identified as handicapped under regulations implementing Section 504 of the Rehabilitation Act of 1973, but may or may not be eligible for special education placement under the Individuals with Disabilities Education Act.</p> <p>Reports a value of 1 when there is a Section 504 record at any point during the reporting period.</p> <p>Otherwise, reports a value of 0.</p> <p><i>Numeric, 1 digit</i></p>	<p>Student Information > Program Participation > Section 504</p> <p>Section504.section504ID</p>
LEP Status	<p>Indicates if the record is for a student who was identified as being Limited English Proficient.</p>	<p>Student Information > Program > Program Participation > LEP > LEP</p> <p>Lep.lep</p>

Data Elements	Description	Location
	<p>Reports based on the student's LEP Status as of the time of the incident.</p> <ul style="list-style-type: none"> • For students who do not have LEP services, reports 0. • For students who have LEP services, reports 1. <p><i>Numeric, 1 digit</i></p>	
<p>Unduplicated Count of Students Disciplined</p>	<p>Reports the unduplicated count of students involved in a behavior incident in which the State Behavior Resolution Code is 00-09, 11.</p> <p>When a student has a behavior event with a State Resolution Code of 00-09 and 11, a count of 1 reports.</p> <p>Otherwise, a value of 0 reports.</p> <p><i>Numeric, 1 digit</i></p>	<p>Behavior > Behavior Management > Incident > Events and Participation > Resolution</p> <p>Calculated value</p>
<p>Classroom Removals</p>	<p>Reports the total number of students (not incidents) who were removed by the teacher or suspended from the classroom. If a student was removed or suspended multiple times, each time is included in this count.</p> <p>Reports the count of instances when a student has a behavior event with a State Behavior Resolution Code is 01: Classroom</p>	<p>Behavior > Behavior Management > Incident > Events and Participation > Resolution</p> <p>Calculated value</p>

Data Elements	Description	Location
	<p>Suspension/Teacher Removal marked as Most Serious Resolution.</p> <p>Otherwise, reports a value of 0.</p> <p><i>Numeric, 4 digits</i></p>	
<p>In-School Suspensions</p>	<p>Reports the total number of students (not incidents) who received an in-school suspension. If a student received multiple in-school suspensions, each time is included in this count.</p> <p>Reports a count of instances when a student has a behavior event with a State Behavior Resolution Code is 02: In School Suspension marked as Most Serious Resolution.</p> <p>Otherwise, reports a value of 0.</p> <p><i>Numeric, 4 digits</i></p>	<p>Behavior > Behavior Management > Incident > Events and Participation > Resolution</p> <p>Calculated value</p>
<p>Received Only One Out-of-School Suspension</p>	<p>Reports the total number of students (not incidents) who received just one out-of-school suspension in the school year.</p> <p>Reports a value of 1 when the student has a behavior event with a State Behavior Resolution Code is 03: Out of School Suspension marked as Most Serious Resolution AND the resolution was assigned to the student</p>	<p>Behavior > Behavior Management > Incident > Events and Participation > Resolution</p> <p>Calculated value</p>

Data Elements	Description	Location
	<p>only once in the selected calendar year.</p> <p>Otherwise, reports a value of 0.</p> <p><i>Numeric, 4 digits</i></p>	
<p>Received More than One Out-of-School Suspension</p>	<p>Reports the total number of students (not incidents) who received an out-of-school suspension more than once during the school year.</p> <p>Reports a value of 1 when the student has a behavior event with a State Behavior Resolution Code is 03: Out of School Suspension marked as Most Serious Resolution AND the resolution was assigned to the student two or more times in the selected calendar year.</p> <p>Otherwise, reports a value of 0.</p> <p><i>Numeric, 4 digits</i></p>	<p>Behavior > Behavior Management > Incident > Events and Participation > Resolution</p> <p>Calculated value</p>
<p>Total Out-of-School Suspensions</p>	<p>Reports the total number of students (not incidents) who received an out-of-school suspension. All instances of the student receiving an out-of-school suspension are counted.</p> <p>Reports a value of 1 when the student has a behavior event with a State Behavior Resolution Code is 03: Out of School</p>	<p>Behavior > Behavior Management > Incident > Events and Participation > Resolution</p> <p>Calculated value</p>

Data Elements	Description	Location
	<p>Suspension marked as Most Serious Resolution.</p> <p>Otherwise, reports a value of 0.</p> <p><i>Numeric, 1 digit</i></p>	
<p>Expulsions with Educational Services</p>	<p>Reports the total number of students (not incidents) who were expelled and were provided with educational services during the expulsion.</p> <p>Reports the total number of instances when the student has a behavior event with a State Behavior Resolution Code is 04, 05, 08 or 11 marked as Most Serious Resolution AND Services During Expulsion is marked. All occurrences for the student are counted.</p> <p>Otherwise, reports a value of 0.</p> <p><i>Numeric, 4 digits</i></p>	<p>Behavior > Behavior Management > Incident > Events and Participation > Resolution</p> <p>Calculated value</p>
<p>Expulsions without Educational Services</p>	<p>Reports the total number of students (not incidents) who were expelled and were not provided with educational services during the expulsion.</p> <p>Reports the total number of instances when the student has a behavior event with a State Behavior Resolution Code is 04, 05, 08 or 11 marked as Most Serious</p>	<p>Behavior > Behavior Management > Incident > Events and Participation > Resolution</p> <p>Calculated value</p>

Suspensions and Expulsions must be greater than or equal to the number reported in the Discipline by Action file.

Data Elements	Description	Location
<p>Students in Special Education that are expelled should almost always be provided services</p>	<p>Resolution AND Services During Expulsion is not marked. All occurrences for the student are counted.</p> <p>Otherwise, reports a value of 0.</p> <p><i>Numeric, 4 digits</i></p>	
<p>Law Enforcement Referral</p>	<p>Reports the total number of students (not incidents) referred to law enforcement. Each time a student was referred to law enforcement is counted.</p> <p>Reports the total number of instances when the student has a behavior event with a State Behavior Resolution Code is 06: Referred to Law Enforcement for Most Serious Action OR if the student has a behavior event with a State Behavior Resolution Code is 06: Referred to Law Enforcement.</p> <p>Otherwise, reports a value of 0.</p> <p>When the State Behavior Resolution Code is 18-22, that event is not included.</p> <p><i>Numeric, 4 digits</i></p>	<p>Behavior > Behavior Management > Incident > Events and Participation > Resolution</p> <p>Calculated value</p>
<p>School Related Arrest</p>	<p>Reports the total number of students (not incidents) who were arrested for any</p>	<p>Behavior > Behavior Management > Incident > Events and Participation > Resolution</p>

Data Elements	Description	Location
	<p>activity conducted on the school grounds, during off-campus school activities, or due to a referral by any school official.</p> <p>Reports the total number of instances when the student has a behavior event with a State Behavior Resolution Code AND the School Related Arrest checkbox is marked.</p> <p>Otherwise, reports a value of 0.</p> <p><i>Numeric, 4 digits</i></p>	<p>Calculated value</p>
Other Action	<p>Reports the total number of students (not incidents) in which another action was taken that has not been counted in any other category. Each other action is included, even if the student has been counted multiple times.</p> <p>Reports the total number of instances when the student has a behavior event with a State Behavior Resolution Code is 07: Other Action Taken or 09: Removal Other, Death, Incarcerated, etc marked as Most Serious Resolution.</p> <p>Otherwise, reports a value of 0.</p>	<p>Behavior > Behavior Management > Incident > Events and Participation > Resolution</p> <p>Calculated value</p>

If multiple offenders in one incident, all resulting actions will be reported based on demographic makeup. This may be in one row or multiple depending on the demographics of students involved

Data Elements	Description	Location
	<p>The value reported here matches the value reported for the Other Actions field on the Discipline by Action report.</p> <p><i>Numeric, 4 digits</i></p>	
<p>Transferred To Alternative School</p>	<p>Reports the number of students for each demographic combination who meet all of the following:</p> <ul style="list-style-type: none"> • State Behavior Resolution Code is 04, 05, 08, 09 or 11. • The Services during Expulsion checkbox is marked. • The Transferred to Alternative School checkbox is marked (The Transferred to Alternative School checkbox is located at Behavior > Behavior Management > Behavior Resolution). <p>All others, report 0.</p> <p><i>Numeric, 4 digits</i></p>	<p>Behavior > Behavior Management > Incident > Events and Participation > Resolution</p> <p>Calculated value</p>
<p>Subjected to Mechanical Restraint</p>	<p>Summary Report Type: Reports the sum of students for each demographic combination where the Behavior Event is assigned a Behavior Response code of M. All occurrences for the student are counted.</p>	<p>Behavior > Behavior Management > Incident > Events and Participation > Response Details > Response Type = M: Mechanical Restraint</p> <p>Calculated value</p>

All below fields are typically reported for CRDC purposes

Data Elements	Description	Location
	<p>Detail Report Type: Reports a count of Behavior Events assigned a Behavior Response code of M for the reported student.</p> <p><i>Numeric, 4 digits</i></p>	
<p>Subjected to Physical Restraint</p>	<p>Summary Report Type: Reports the sum of students for each demographic combination where the Behavior Event is assigned a Behavior Response code of P. All occurrences for the student are counted.</p> <p>Detail Report Type: Reports a count of Behavior Events assigned a Behavior Response code of P for the reported student.</p> <p><i>Numeric, 4 digits</i></p>	<p>Behavior > Behavior Management > Incident > Events and Participation > Response Details > Response Type = P: Physical Restraint</p> <p>Calculated value</p>
<p>Subjected to Seclusion</p>	<p>Summary Report Type: Reports the sum of students for each demographic combination where the Behavior Event is assigned a Behavior Response Code of S. All occurrences for the student are counted.</p> <p>Detail Report Type: Reports a count of Behavior Events assigned a Behavior Response code of S for the reported student.</p> <p><i>Numeric, 4 digits</i></p>	<p>Behavior > Behavior Management > Incident > Events and Participation > Response Details > Response Type = S: Seclusion</p> <p>Calculated value</p>

Data Elements	Description	Location
<p>Students Reported as Harassed or Bullied on the Basis of Sex</p>	<p>Summary Report Type: Reports the sum of students for each demographic combination where the Behavior Event has a State Event Code of 18 and the Student Role is Victim. All occurrences for the student are counted.</p> <p>Detail Report Type: Reports a count of Behavior Events that have a State Event Code of 18 and the Student Role is Victim for the reported student.</p> <p>NOTE: For both Report Types, a Behavior Resolution is NOT required for this field.</p> <p><i>Numeric, 4 digits</i></p>	<p>Behavior > Behavior Management > Incident > Events and Participation > Participant Details > Role = V: Victim</p> <p>Behavior > Admin > Behavior Event Types > State Event Code = 18: Allegations of harassment or bullying on the basis of sex</p> <p>Calculated value</p>
<p>Students Reported as Harassed or Bullied on the Basis of Race or Color or National Origin</p>	<p>Summary Report Type: Reports the sum of students for each demographic combination where the Behavior Event has a State Event Code of 19 and the Student Role is Victim. All occurrences for the student are counted.</p> <p>Detail Report Type: Reports a count of Behavior Events that have a State Event Code of 19 and the Student Role is Victim for the reported student.</p> <p>NOTE: For both Report Types, a Behavior</p>	<p>Behavior > Behavior Management > Incident > Events and Participation > Participant Details > Role = V: Victim</p> <p>Behavior > Admin > Behavior Event Types > State Event Code = 19: Allegations of harassment or bullying on the basis of race, color or national origin</p> <p>Calculated value</p>

Data Elements	Description	Location
	<p>Resolution is NOT required for this field.</p> <p><i>Numeric, 4 digits</i></p>	
<p>Students Reported as Harassed or Bullied on the Basis of Disability</p>	<p>Summary Report Type: Reports the sum of students for each demographic combination where the Behavior Event has a State Event Code of 20 and the Student Role is Victim. All occurrences for the student are counted.</p> <p>Detail Report Type: Reports a count of Behavior Events that have a State Event Code of 20 and the Student Role is Victim for the reported student.</p> <p>NOTE: For both Report Types, a Behavior Resolution is NOT required for this field.</p> <p><i>Numeric, 4 digits</i></p>	<p>Behavior > Behavior Management > Incident > Events and Participation > Participant Details > Role = V: Victim</p> <p>Behavior > Admin > Behavior Event Types > State Event Code = 20: Allegations of harassment or bullying on the basis of disability</p> <p>Calculated value</p>
<p>Students Disciplined for Bullying or Harassment on the Basis of Sex</p>	<p>Summary Report Type: Reports the sum of students for each demographic combination where the Behavior Event has a State Event Code of 18 and the Student Role is Offender. All occurrences for the student are counted.</p> <p>Detail Report Type: Reports a count of Behavior Events that have a State Event Code of 18 and the</p>	<p>Behavior > Behavior Management > Incident > Events and Participation > Participant Details > Role = O: Offender</p> <p>Behavior > Admin > Behavior Event Types > State Event Code = 18: Allegations of harassment or bullying on the basis of sex</p> <p>Calculated value</p>

Data Elements	Description	Location
	<p>Student Role is Offender for the reported student.</p> <p><i>Numeric, 4 digits</i></p>	
<p>Students Disciplined for Bullying or Harassment on the Basis of Race or Color or National Origin</p>	<p>Summary Report Type: Reports the sum of students for each demographic combination where the Behavior Event has a State Event Code of 19 and the Student Role is Offender. All occurrences for the student are counted.</p> <p>Detail Report Type: Reports a count of Behavior Events that have a State Event Code of 19 and the Student Role is Offender for the reported student.</p> <p><i>Numeric, 4 digits</i></p>	<p>Behavior > Behavior Management > Incident > Events and Participation > Participant Details > Role = O: Offender</p> <p>Behavior > Admin > Behavior Event Types > State Event Code = 19: Allegations of harassment or bullying on the basis of race, color or national origin</p> <p>Calculated value</p>
<p>Students Disciplined for Bullying or Harassment on the Basis of Disability</p>	<p>Summary Report Type: Reports the sum of students for each demographic combination where the Behavior Event has a State Event Code of 20 and the Student Role is Offender. All occurrences for the student are counted.</p> <p>Detail Report Type: Reports a count of Behavior Events that have a State Event Code of 20 and the Student Role is Offender for the reported student.</p>	<p>Behavior > Behavior Management > Incident > Events and Participation > Participant Details > Role = O: Offender</p> <p>Behavior > Admin > Behavior Event Types > State Event Code = 20: Allegations of harassment or bullying on the basis of disability</p> <p>Calculated value</p>

Data Elements	Description	Location
	<i>Numeric, 4 digits</i>	
LASID	<p>Reports the student's local student number.</p> <p><i>Numeric, 10 digits</i></p>	<p>Census > People > Demographics > Student Number</p> <p>Person.studentNumber</p>
Incident ID	<p>Reports the incident ID.</p> <p>This field only reports on the Detail Type Report.</p> <p><i>Numeric, 10 digits</i></p>	<p>Behavior > Behavior Management > Incident ID</p> <p>BehaviorIncident.incidentID</p>
Most Serious	<p>When the Resolution being reported is marked as Most Serious, this field reports Yes.</p> <p>Otherwise, this field reports No.</p> <p>This field only reports on the Detail Type Report.</p> <p><i>Alphanumeric, Yes or No</i></p>	<p>Behavior > Behavior Management > Most Serious Action</p> <p>BehaviorIncident.mostSeriousAction</p>